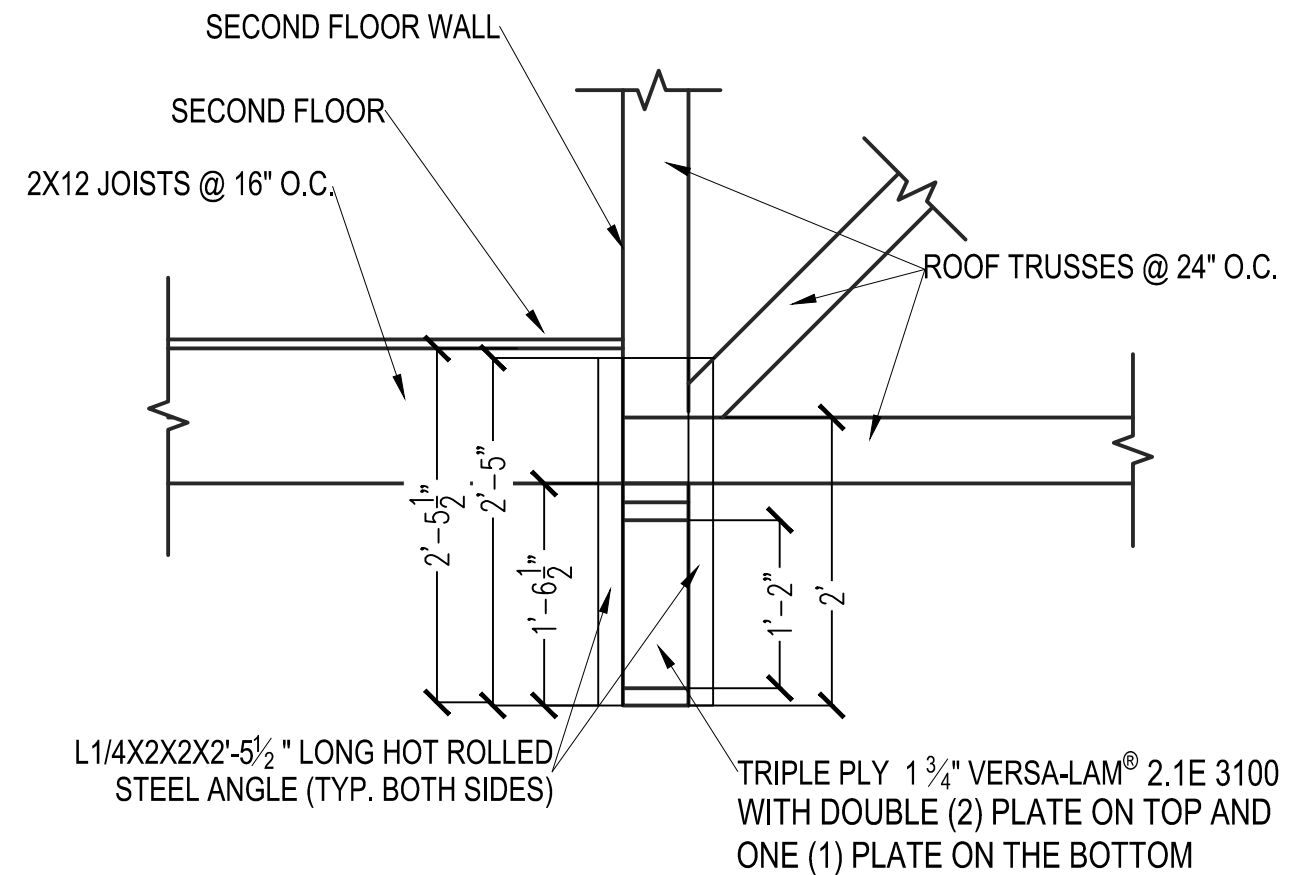


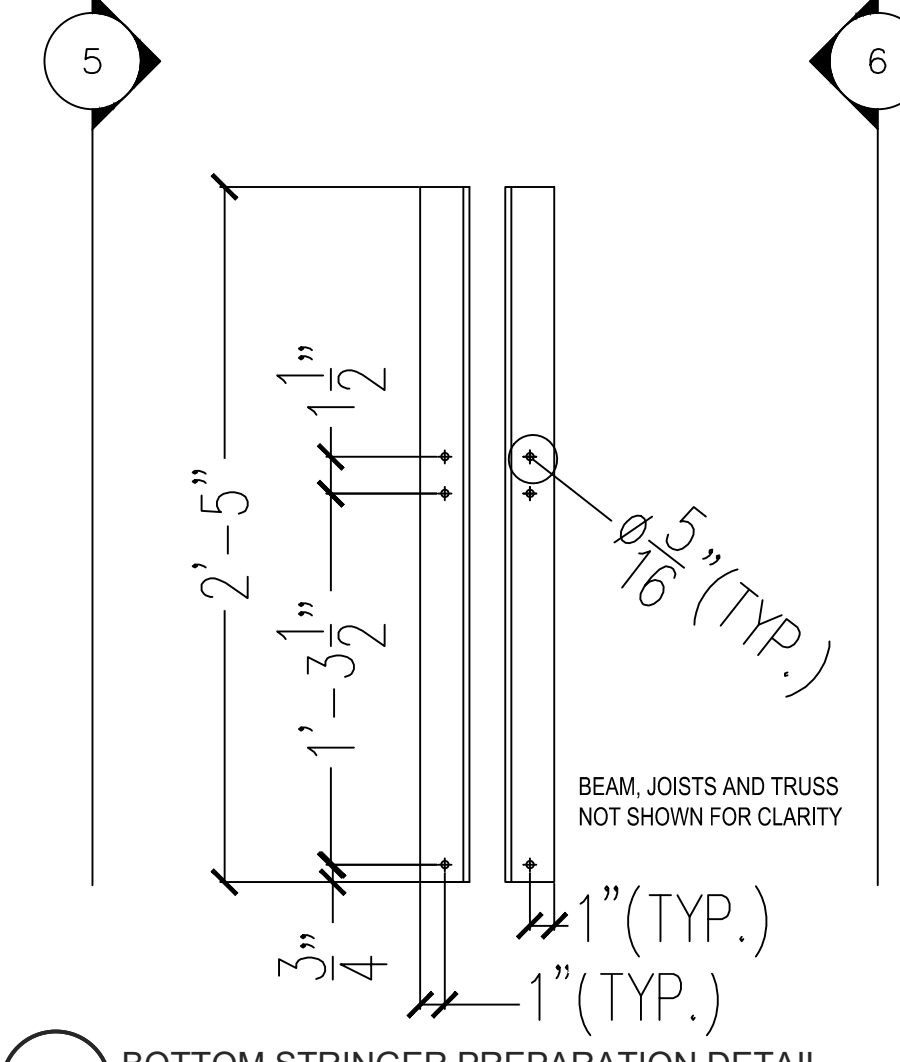
A TRIPLE PLY LVL BEAM #1
3/4" = 1'-0"

CONSTRUCTION NOTES

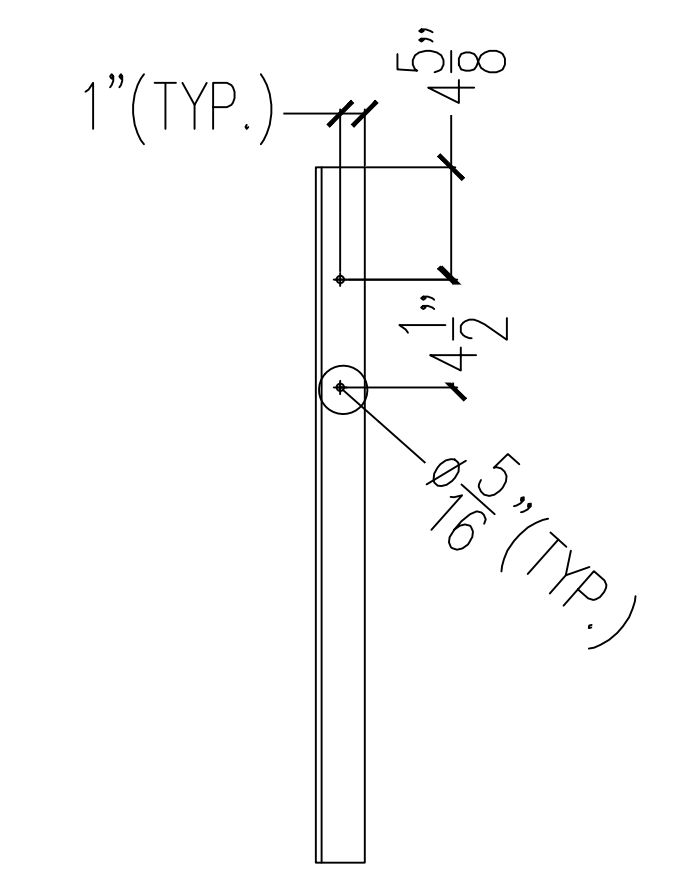
- MEMBER CONNECTIONS FOR TRIPLE PLY LVL BEAM NAIL WITH 3 ROWS 16D BOX/SINKER NAILS @ 12 INCHES ON CENTER. MAINTAIN A MINIMUM NAIL SPACING OF 2 INCHES AT ALL TIMES.
- SCREW STEEL ANGLE TO DOUBLE PLATE ON TOP AND SINGLE PLATE ON BOTTOM OF LVL BEAM WITH 1/4X1-1/2-IN DOUBLE BARRIER SDS WOOD SCREW, TYPE 17 POINT.
- SCREW STEEL ANGLE TO TOP FLOOR JOISTS AND TRUSSES WITH 1/4X1-1/2-IN DOUBLE BARRIER SDS WOOD SCREW, TYPE 17 POINT.
- AT LOCATIONS WHERE DUCTWORK OR OTHER OCCURS, PROVIDE AN ANGLE CONNECTION TO REACH AS FAR AS POSSIBLE.
- PROVIDE SAFE PROTECTION FOR DUCTWORK OR OTHERS FROM STEEL ANGLE CONNECTIONS
- LVL BEAM #2 OK AS IS.



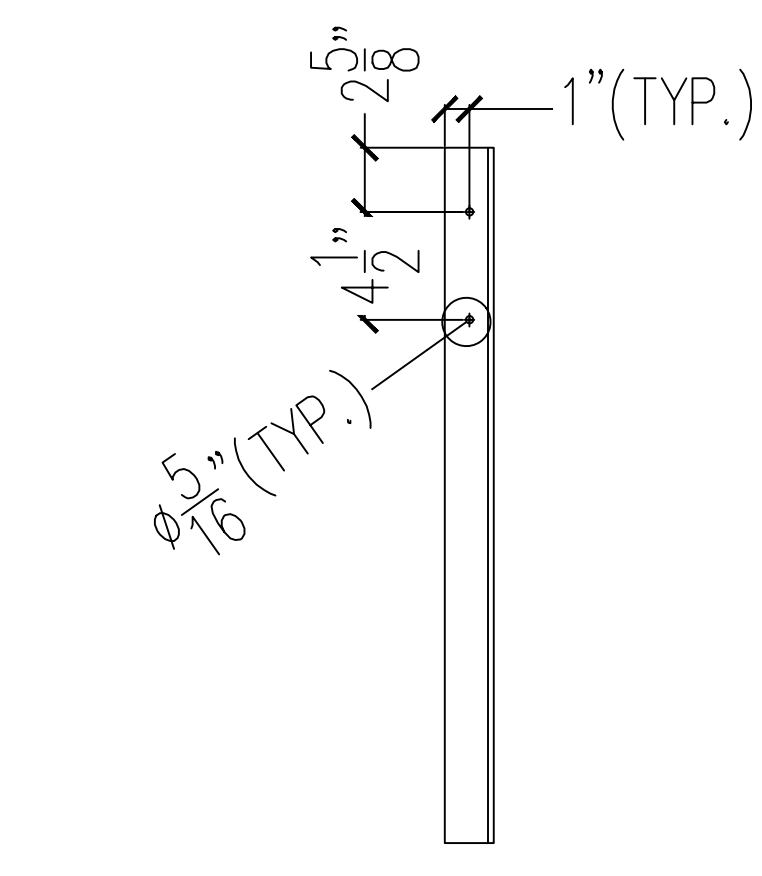
3 STEEL ANGLE STIFFENER DETAIL
3/4" = 1'-0"



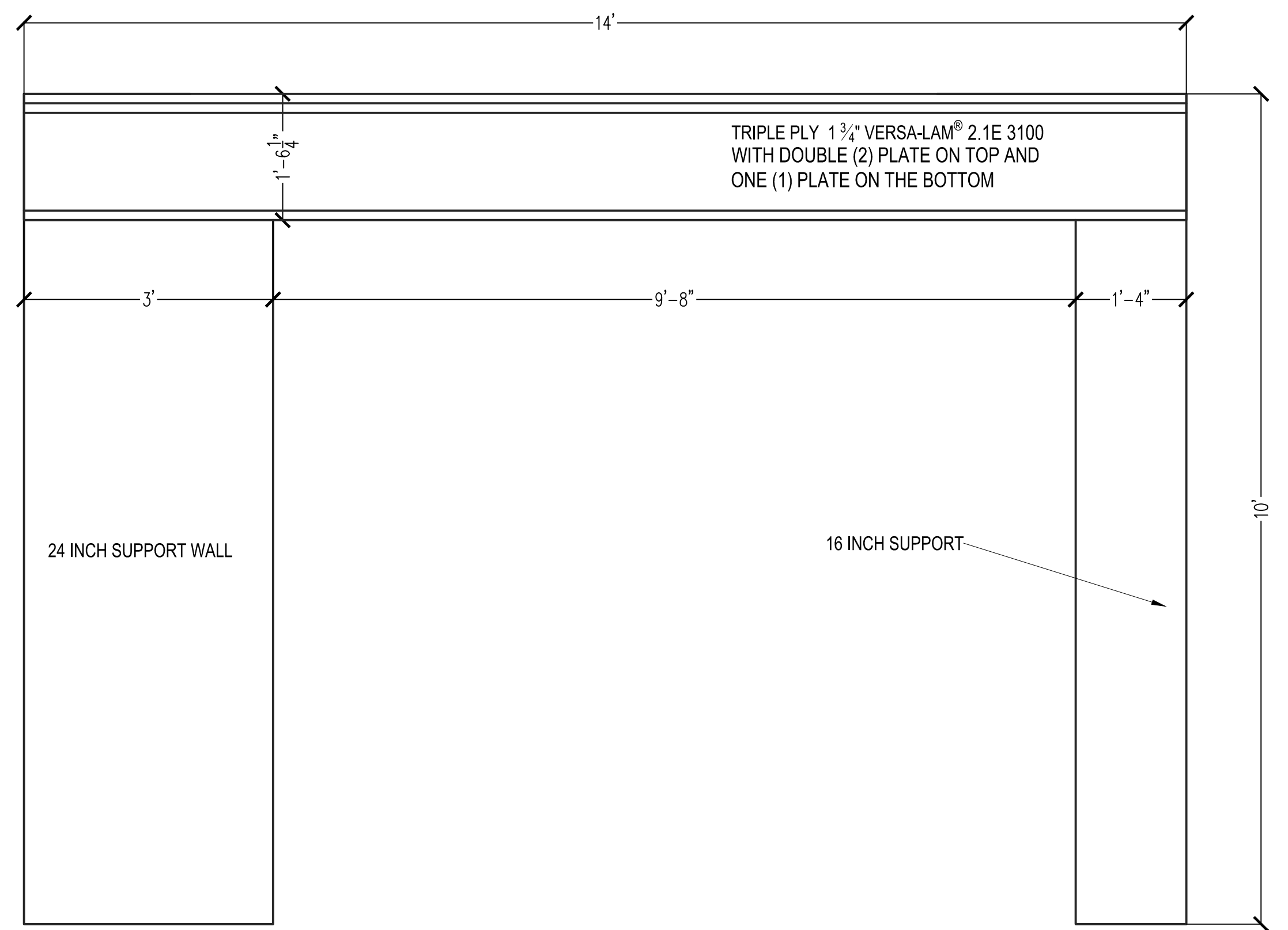
4 BOTTOM STRINGER PREPARATION DETAIL
1-1/2" = 1'-0"



5 TOP LEFT STRINGER DETAIL
1-1/2" = 1'-0"



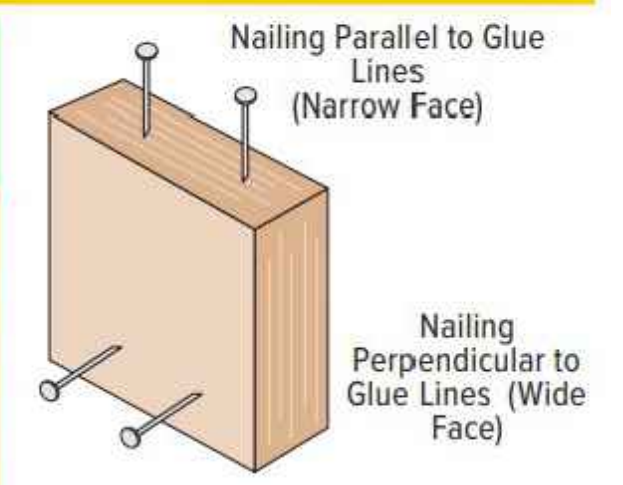
6 TOP RIGHT STRINGER DETAIL
1-1/2" = 1'-0"



B TRIPLE PLY LVL BEAM #2
3/4" = 1'-0"

CLOSEST ALLOWABLE NAIL SPACING

Versa-Lam® Products Nail Size	Nailing Parallel to Glue Lines (Narrow Face) ⁽¹⁾						Nailing Perpendicular to Glue Lines (Wide Face)	
	Versa-Lam® 1 1/2"		Versa-Lam® 1 3/4"		Versa-Lam® 3 1/2" & Wider		All Products	
	O.C. (in)	End (in)	O.C. (in)	End (in)	O.C. (in)	End (in)	O.C. (in)	End (in)
8d Box (0.113"ø x 2.5")	3	1 1/2	2	1	2	1/2	2	1/2
8d Common (0.131"ø x 2.5")	3	2	3	2	2	1	2	1
10d & 12d Box (0.128"ø x 3", 3.25")	3	2	3	2	2	1	2	1
16d Box (0.135"ø x 3.5")	3	2	3	2	2	1	2	1
10d & 12d Common & 16d Sinker (0.148"ø x 3", 3.25")	4	3	4	3	2	2	2	2
16d Common (0.162"ø x 3.5")	6	4	6	3	2	2	2	2



1) For 1 1/4" thickness and greater, 2 rows of nails (such as for a metal strap) are allowed (use 1/2" minimum offset between rows and stagger nails).

the same diameter as the bolt.

Top-Loaded Applications			
For top-loaded beams and beams with side loads less than shown in Side-Loaded Applications table above:			
Plies	Depth	Nailing ⁽²⁾	Maximum Uniform Load From One Side
(2) 1 3/4" plies	Depths 11 7/8" & less	2 rows 16d box/sinker nails @ 12" o.c.	400 plf
	Depths 14" - 18"	3 rows 16d box/sinker nails @ 12" o.c.	600 plf
	Depth = 24"	4 rows 16d box/sinker nails @ 12" o.c.	800 plf
(3) 1 3/4" plies ⁽¹⁾	Depths 11 7/8" & less	2 rows 16d box/sinker nails @ 12" o.c.	300 plf
	Depths 14" - 18"	3 rows 16d box/sinker nails @ 12" o.c.	450 plf
	Depth = 24"	4 rows 16d box/sinker nails @ 12" o.c.	600 plf
(4) 1 3/4" plies	Depths 18" & less	2 rows 1/2" bolts @ 24" o.c., staggered	335 plf
	Depth = 24"	3 rows 1/2" bolts @ 24" o.c., staggered every 8"	505 plf
(2) 3 1/2" plies	Depths 18" & less	2 rows 1/2" bolts @ 24" o.c., staggered	855 plf
	Depth 20" - 24"	3 rows 1/2" bolts @ 24" o.c., staggered every 8"	1285 plf

1. The nail schedules shown apply to both sides of a 3-member beam.
 6. An equivalent specific gravity of 0.5 may be used when designing specific connections with

OWNER
NELLY GUTIERREZ
P.O. BOX 1864
CLINTON, NC 28329

DESIGN ARCHITECT
MAE DESIGN, INC
107 COLONIAL DR.
CLINTON, NC 28328
EAM@MAEDSIGNAE.COM
980.263.7727

TRIPLE PLY LVL BEAM #1 AND #2
NELLY GUTIERREZ RESIDENCE
846 RACKLEY RD. CLINTON, NC 28328

DRAWN BY: EAM
CHECKED BY: 11/17/2023
DATE: 11/17/2023
SCALE: AS NOTED
PROJECT #:
LAST MODIFIED BY:

MAE DESIGN

SHEET 22 OF 22
6.3

846 RACKLEY RD. CLINTON, NC 28328